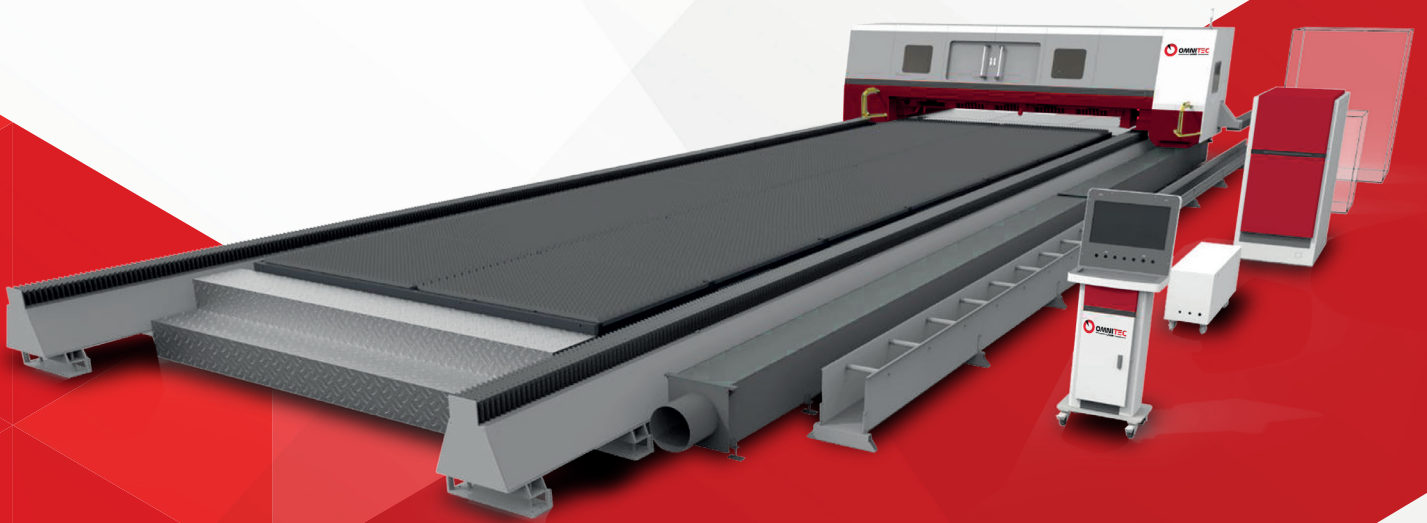




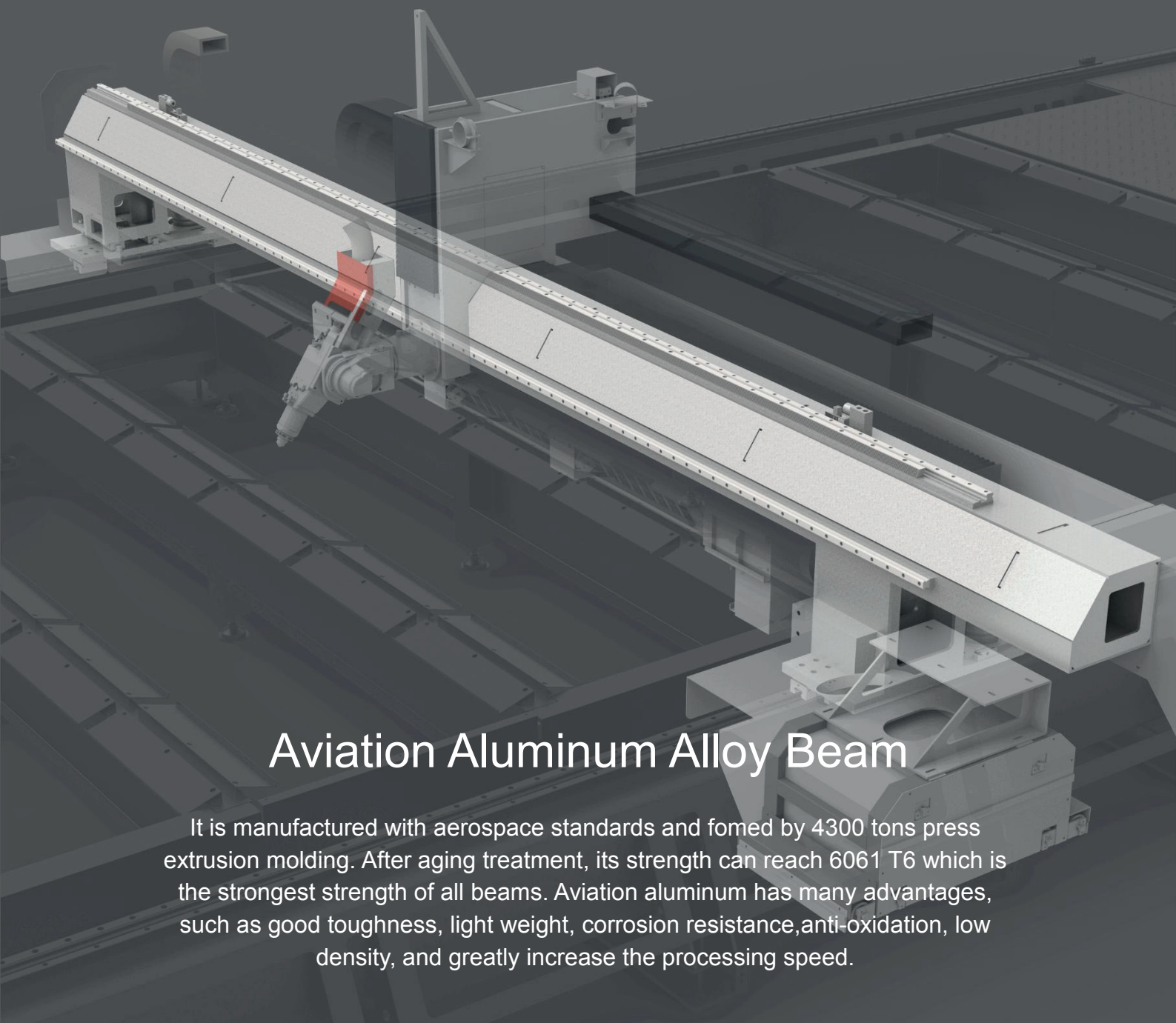
OMNITEC
LÁSER



SMART LA
Laser Cutting Machines



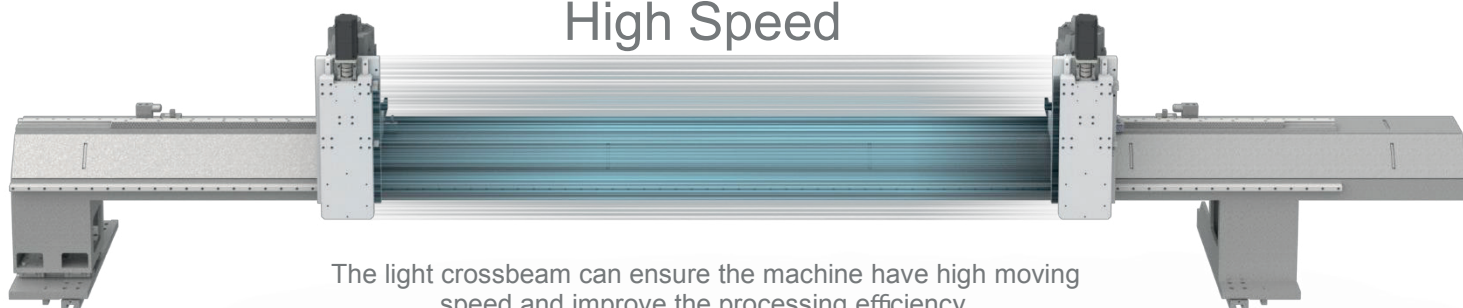
MODEL	SMART-LA 12025
Cutting Area (L×W)	12200mm x 2570mm
Laser Source	Fiber & 30000W
CNC System	HYPCUT
Max Moving Speed	100m/min, Acceleration is 1G
Position Accuracy (X and Y axis)	0.05mm
Reposition Accuracy (X and Y axis)	0.03mm
Power Supply Requirement	380V 50/60Hz



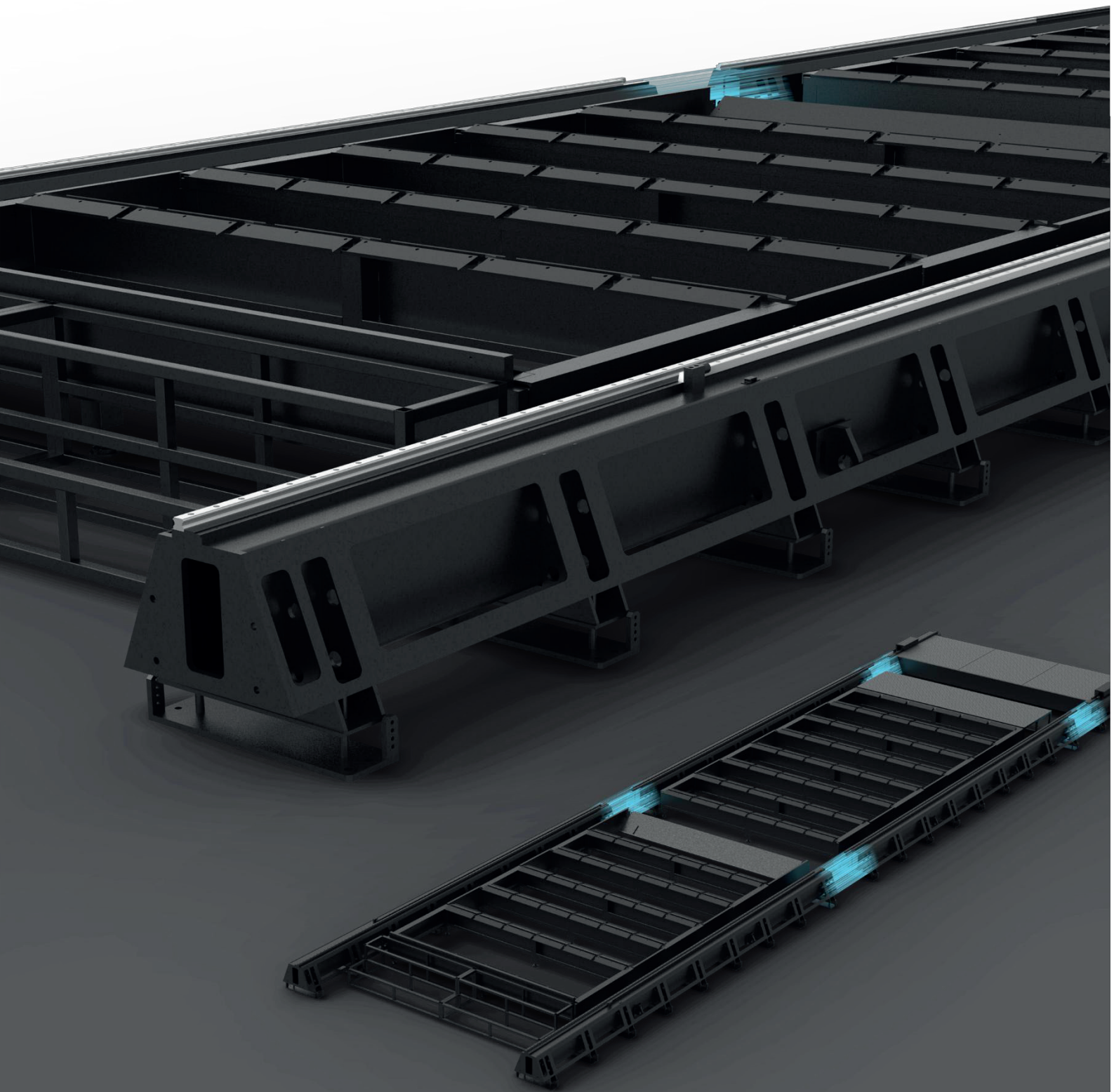
Aviation Aluminum Alloy Beam

It is manufactured with aerospace standards and formed by 4300 tons press extrusion molding. After aging treatment, its strength can reach 6061 T6 which is the strongest strength of all beams. Aviation aluminum has many advantages, such as good toughness, light weight, corrosion resistance, anti-oxidation, low density, and greatly increase the processing speed.

High Speed



The light crossbeam can ensure the machine have high moving speed and improve the processing efficiency.



Super heavy welded bed

It is welded by heavy steel plate, the current mainstream bed structure, high stability. The plate welding bed is subjected to stress relief annealing treatment on the basis of heavier, so that the bed is not easy to deform.



Higher photoelectric conversion efficiency

Second generation optical fiber transmission system
Better and more stable beam quality



High electro-optical conversion efficiency (>40%)



Good beam quality



High energy density



Wider modulation frequency



High reliability



Long service life



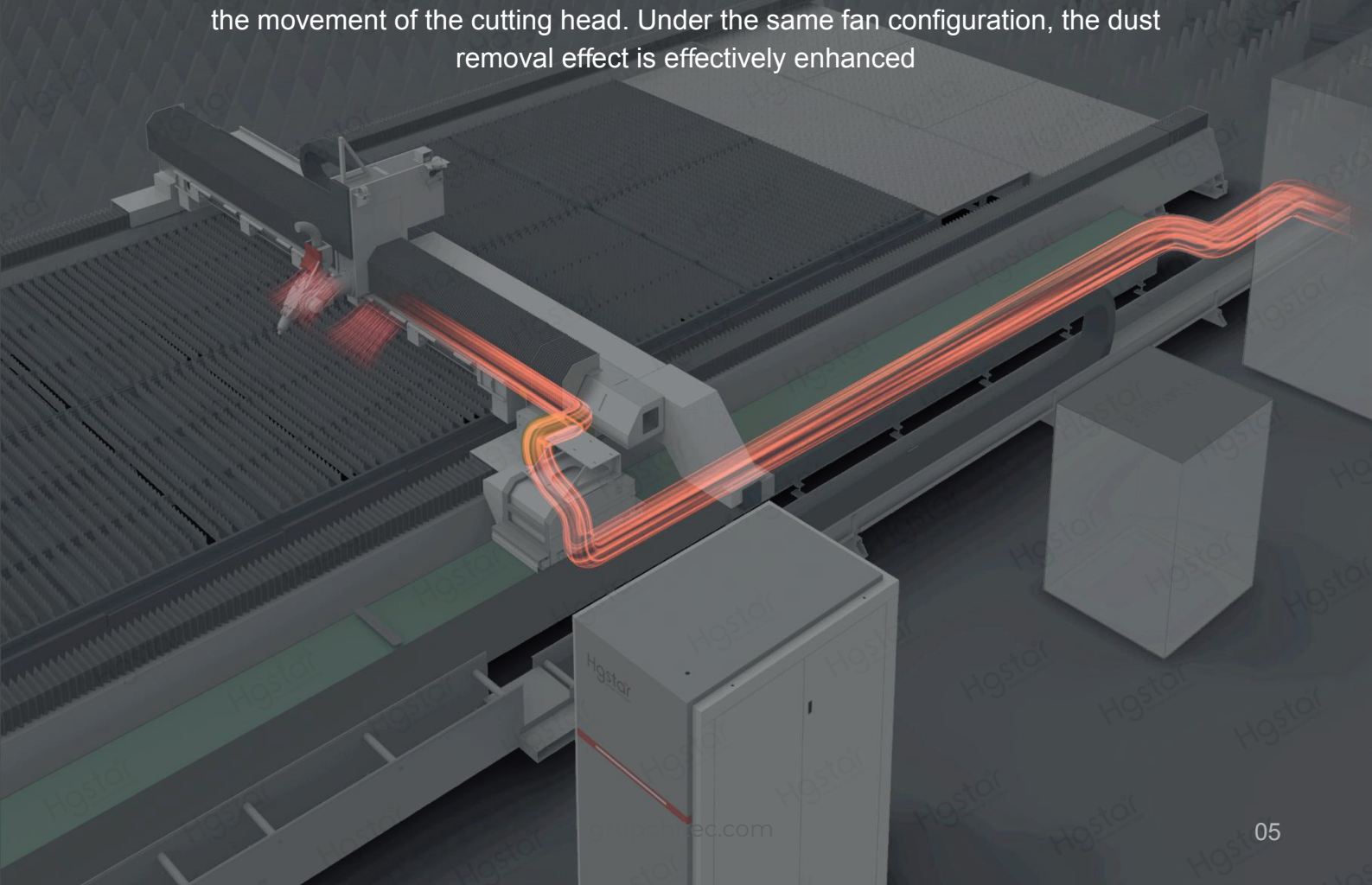
Maintenance free operation

 Details Structure



Partition dust removal

Through fine setting, the dust removal tuyere can be opened and closed with the movement of the cutting head. Under the same fan configuration, the dust removal effect is effectively enhanced



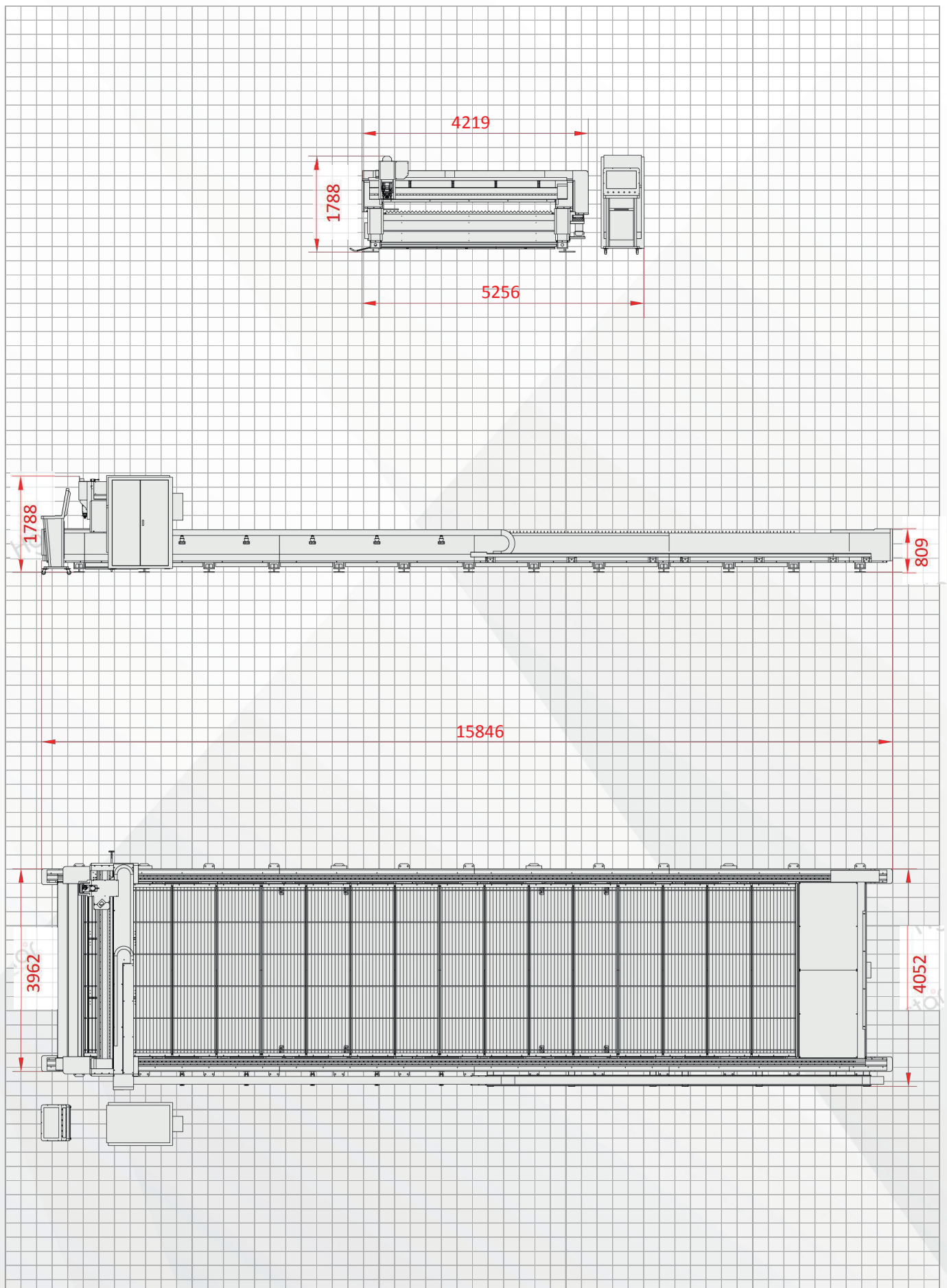
TECHNICAL SPECIFICATIONS

Machine Model	SMART-LA 12025 30000W
Cutting Area (L×W)	12200mm×2570mm
Laser Source	Raycus Fiber & 30000W
Transmission system	Dual sides driven gantry structure
CNC System	HYP CUT
Servo Motor	INOVANCE
Laser Cutting Head	ProCutter / BLT
Display	32" Touch Screen
Max Moving Speed	100m/min, Acceleration is 1G
Position Accuracy (X and Y axis)	0.05mm
Reposition Accuracy (X and Y axis)	0.03mm
Lubrication system	Full-automatic
Power Supply Requirement	380V 50/60Hz
Working environment	Temp:5- 35 °C, humidity:≤70%

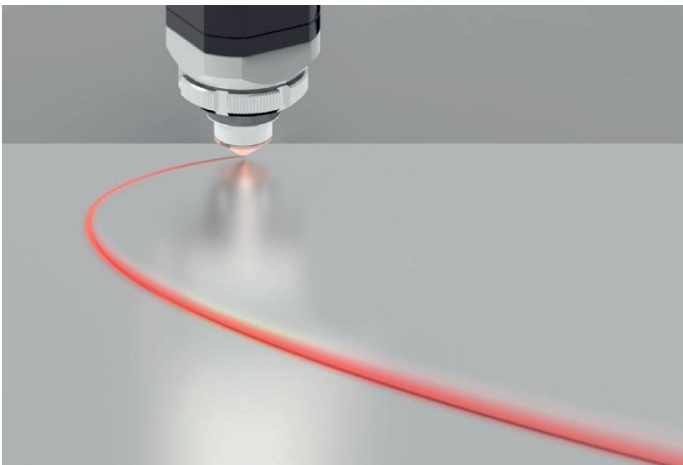
MACHINE CONFIGURATION

NO.	Model	Name	Quantity	Remarks
1	SMART-LA 12025 30000W	Fiber laser cutting machine (12200mm*2570mm)	1 set	HGSTAR
2	30000W	Laser generator	1 set	RAYCUS
3	Water chiller	Special water chiller for fiber laser generator	1 set	HANLI
4	Laser head	2D Auto Focus Head	1 set	PRECITEC / BLT
5	Control system	HypCut 8000	1 set	HypCut 8000
6	Software	CYPNEST	1 set	CYPNEST
7	Driving system	High speed servo motor	4 set	INOVANCE
8	Reducer	imported	4 set	Japan Shimpo reducer
9	Electric components	imported	1 set	Chint/Schneider
10	Guide rail	imported	1 set	APEX
11	Rack	imported	1 set	APEX

MACHINE OCCUPATION MAP

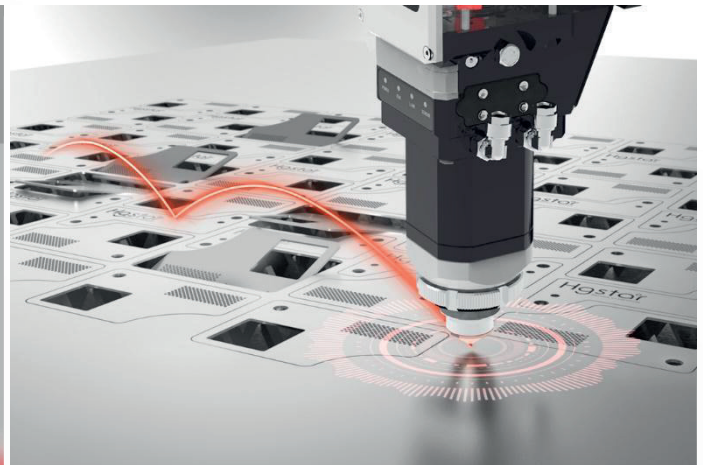


EXCELLENT FUNCTION



Vibration Suppression

One key quick setting can easily solve the vibration problem of thick plate processing



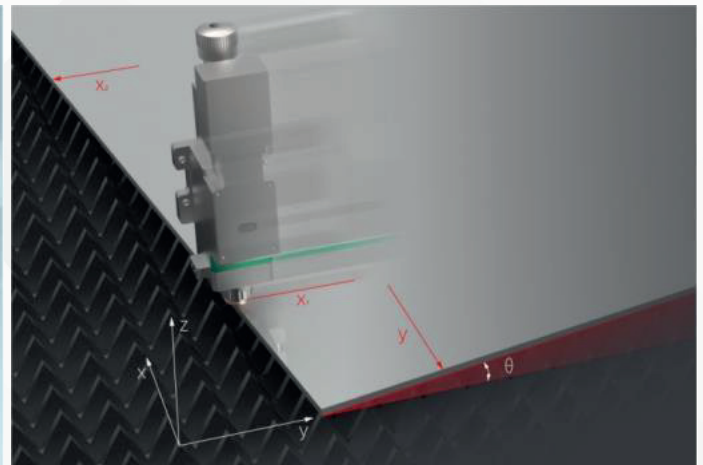
Intelligent obstacle avoidance

Intelligently avoid random raised areas in the cutting process and reduce the risk of head collision



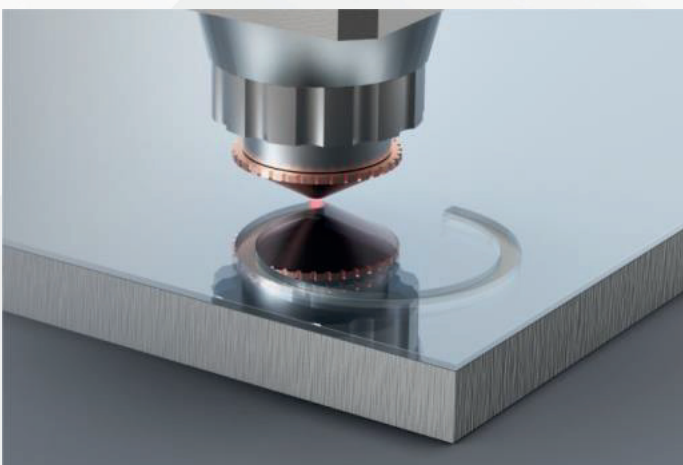
Exclusive tuning database

All you need to do is a simple touch, and the complicated operations are handed over to us



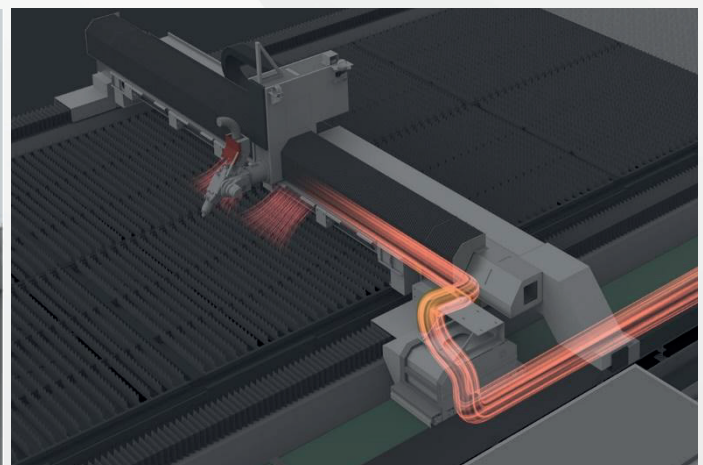
Three point edge finding

The inclination angle and origin of sheet metal are sensed through automatic edge-finding to avoid waste and save time



Membrane removal process

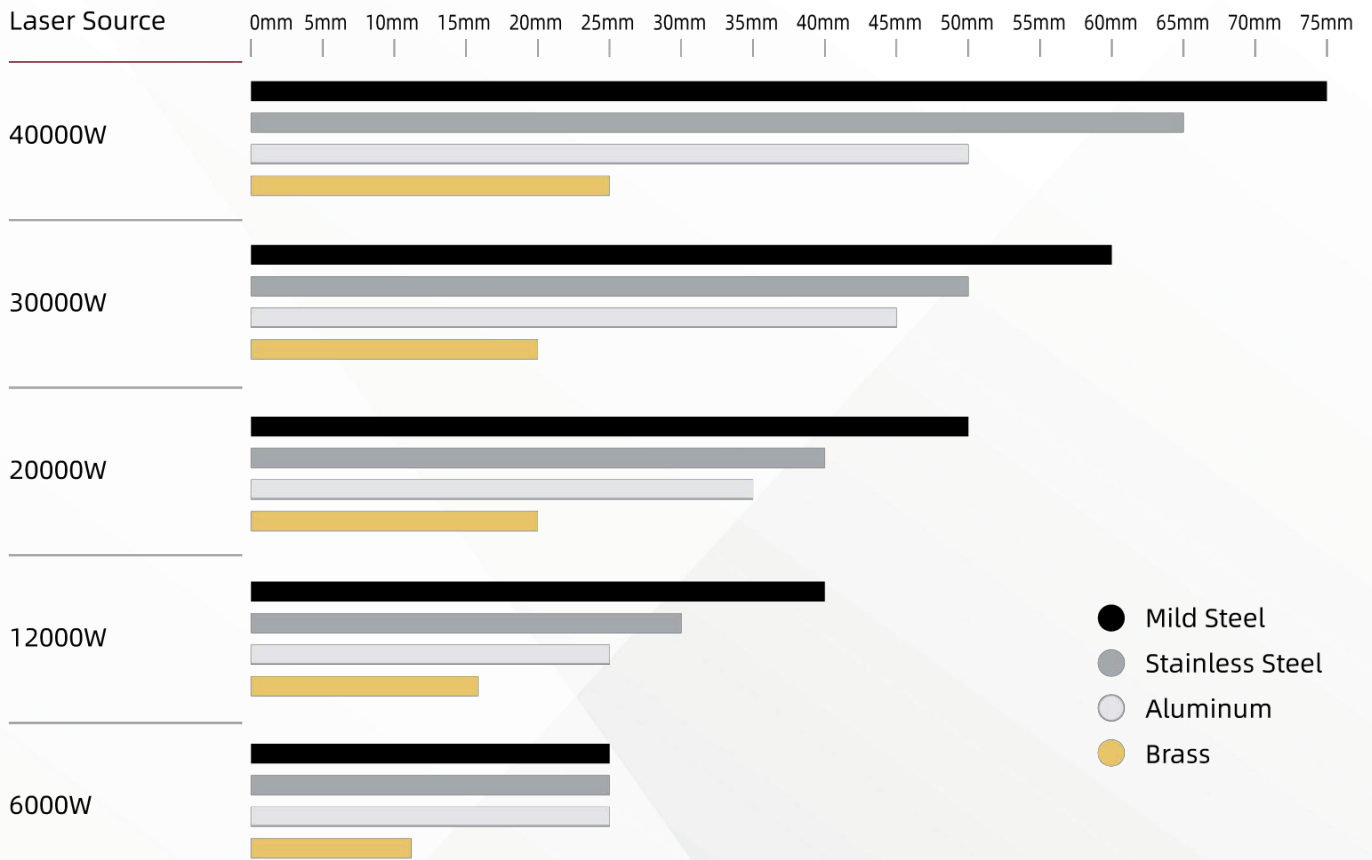
The sequence of film removal and pre perforation can be set flexibly and make workpiece cutting more perfect



Partition dust removal

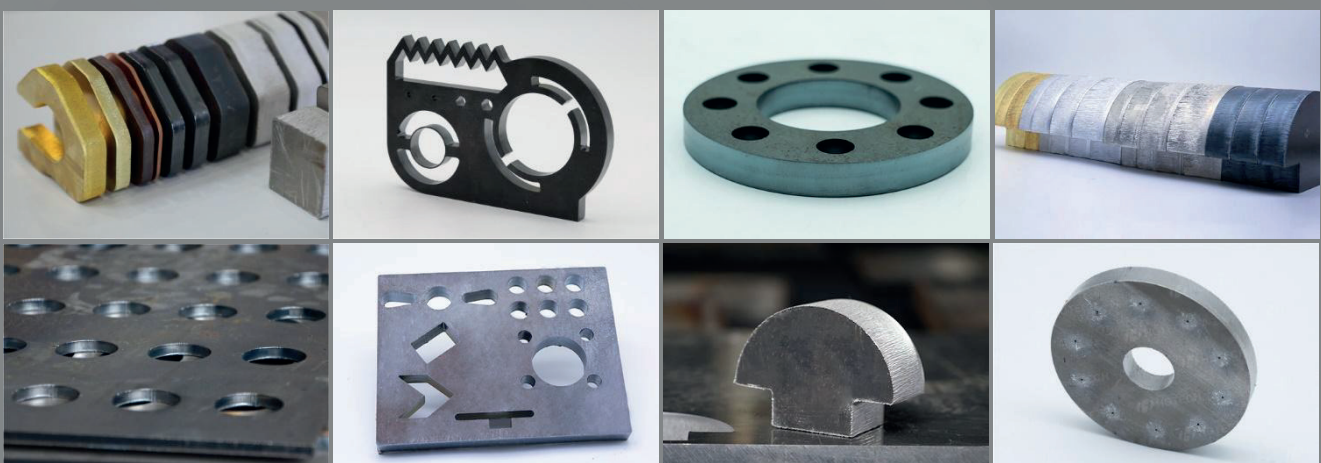
Through fine setting, the dust removal tuyere can be opened and closed with the movement of the cutting head. Under the same fan configuration, the dust removal effect is effectively enhanced

CUTTING PARAMETER

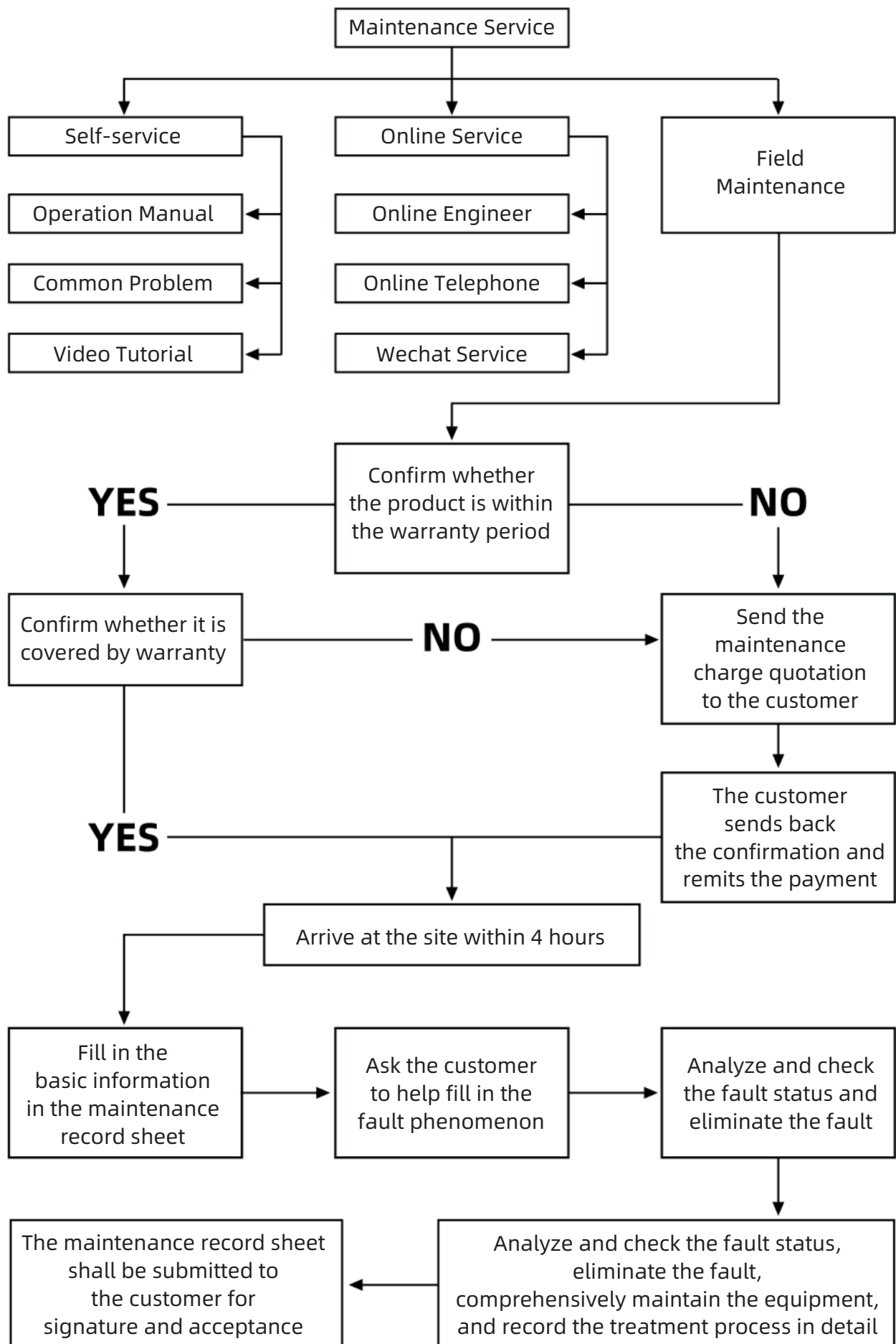


Cutting Samples

Applicable to cutting carbon steel, stainless steel, aluminum, brass , alloy metals, etc.



SERVICE MAINTENANCE PROCESS



SERVICE QUALITY INSPECTION



Bed Foot Installation ||>

Adjust the height of the feet according to the test results of the strip level to ensure the accuracy of subsequent installation



Rail Installation ||>

Use photoelectric autocollimator to detect the straightness and flatness of the guiderail to ensure that the detection value is within the standard range



Rack Installation ||>

The relative position of the guide rail and the guide rail is locked and clamped by the measuring rod. Statistics and analysis of measurement data to ensure that they are parallel



Beam Installation ||>

After the beam is installed . use a three-coordinate measuring instrument to check the coaxiality to ensure the relative perpendicularity of the X / Y / Z three-axis



Positioning Accuracy Inspection ||>

The laser interferometer tests the X-axis positioning accuracy to ensure the accuracy of the whole machine



Positioning Accuracy Inspection ||>

The laser interferometer tests the Y-axis positioning accuracy to ensure the accuracy of the whole machine



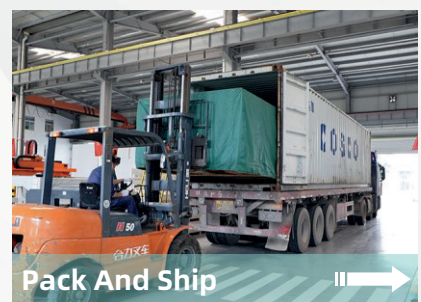
Positioning Accuracy Inspection ||>

The laser interferometer tests the Z-axis positioning accuracy to ensure the accuracy of the whole machine



72h Machine Aging Test ||>

Simulate the high-intensity test of various harsh conditions in the actual use of the equipment , and at the same time , according to the requirements of use , rationalize the improvement to ensure the factory pass rate and improve the reliability of the equipment



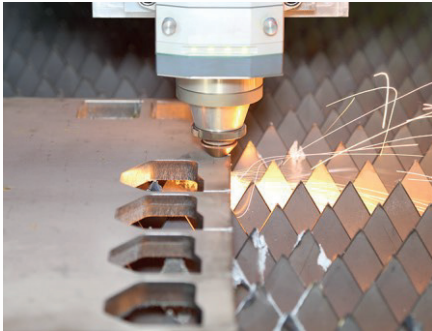
Pack And Ship ||>

Adopt sealed composite aluminum foil moisture-proof low-pressure packaging and thick wooden boards to protect the fuselage to prevent bumps and collisions during shipping , and minimize unnecessary mechanical losses that may occur during transportation

SERVICE DELIVERY PROCESS

1

Machine Inspection



2

Component Fixing



3

Protective Film Wrapping



4

Wooden Boxseal



5

Edge Reinforcement



6

Separate Packaging



7

Lifting Rail Transfer



8

Container Loading



9

Transportation





OMNITEC
LÁSER

Contáctanos

✉ info@grupohitec.com

✉ ventas@grupohitec.com

🌐 grupohitec.com