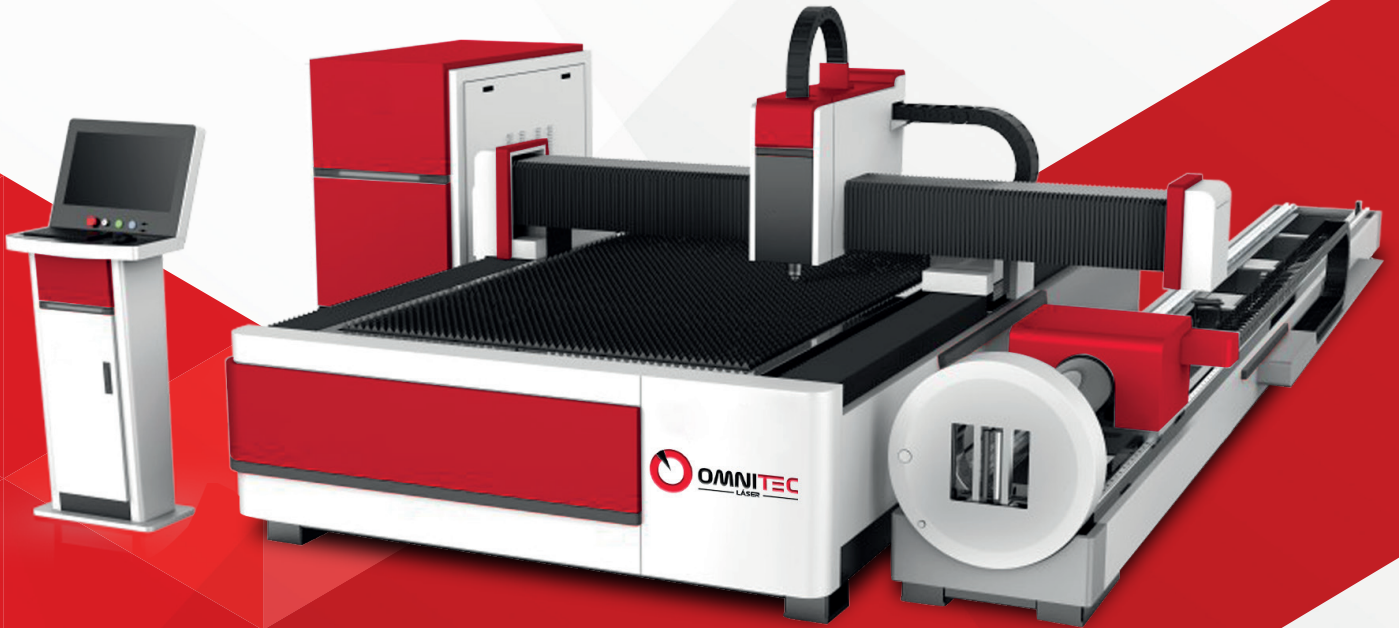




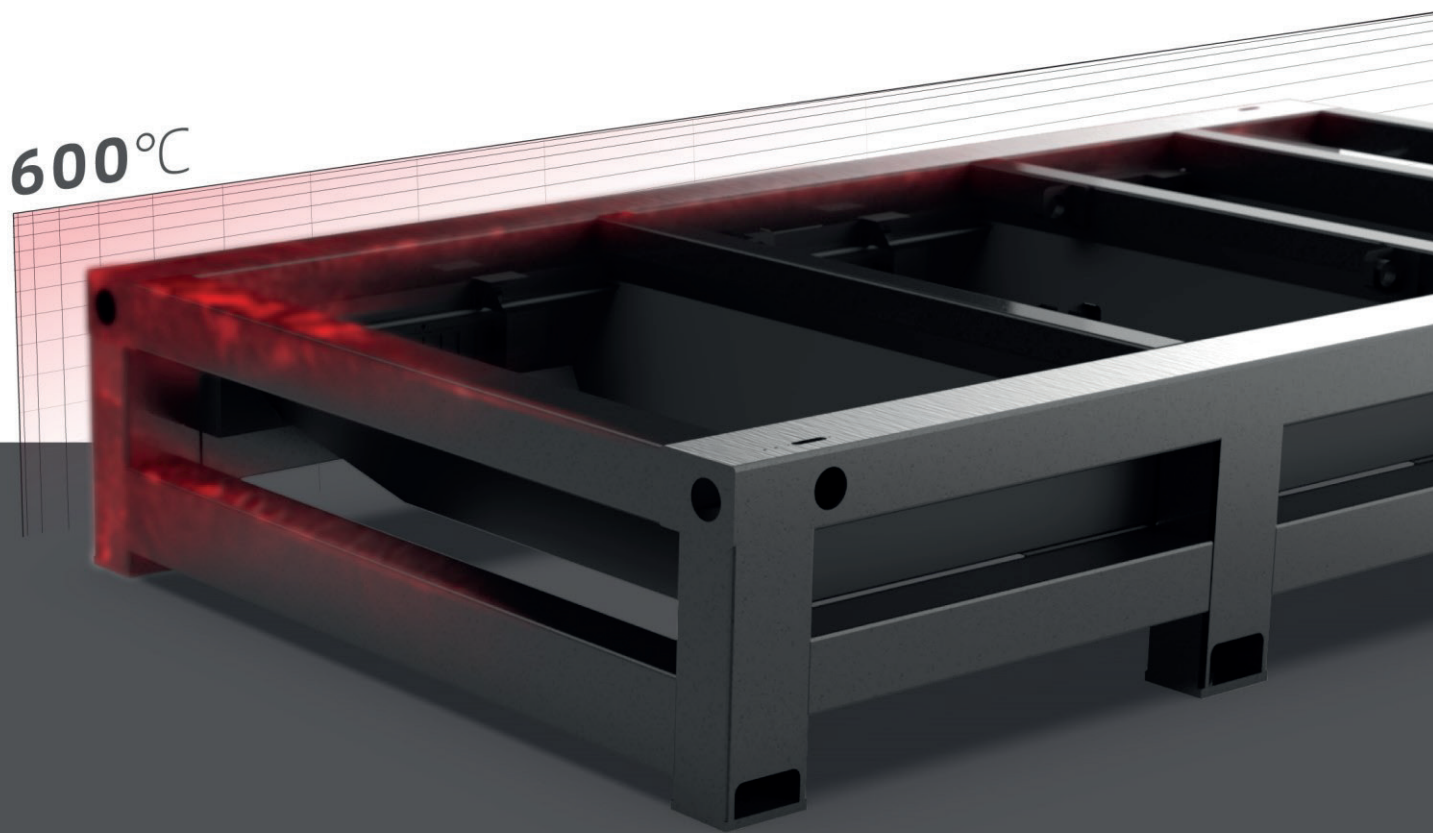
OMNITEC
LÁSER



SMART SERIES
Laser Cutting Machines



MODEL	SMART3015 Plus T	SMART4015 Plus T	SMART 6015 Puls T
Cutting Area (LxW)	3048mm x 1524mm	4048mm x 1524mm	6048mm x 1524mm
Laser Source	Fiber & 1500W - 12000W		
CNC System	FSCUT		
Max Moving Speed	120m/min, Acceleration is 1.2G		
Position Accuracy (X and Y axis)	0.05mm		
Reposition Accuracy (X and Y axis)	0.03mm		
Power Supply Requirement	380V 50/60Hz		



High strength machine bed

The machine bed is processed with a stress relief annealing method at 600°C, which ensures a strong structure rigidity



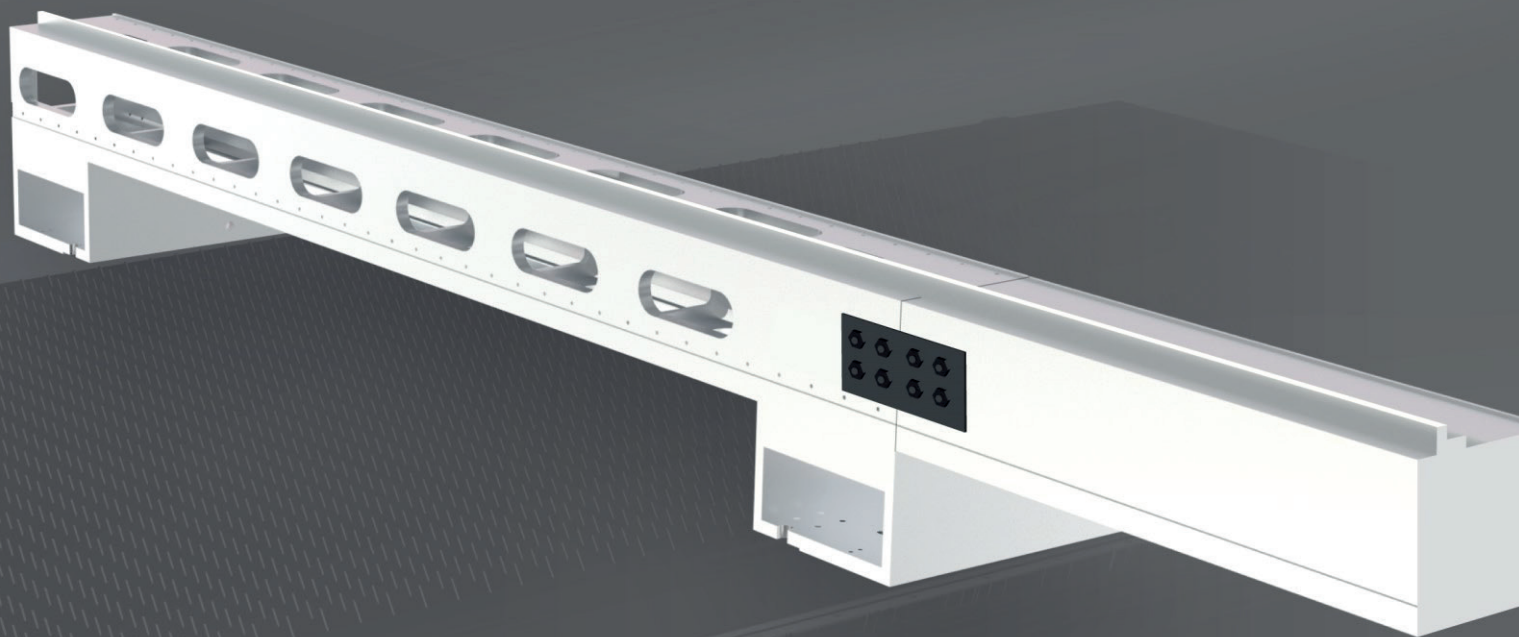
Small Deformation



Low Vibration

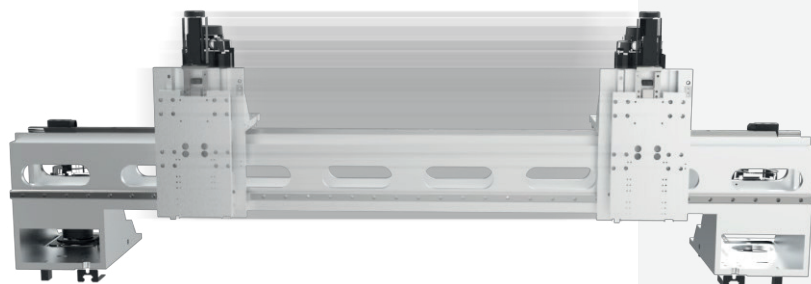


High Precision



Beam made of cast aluminum

The beam is formed by integral steel die and die casting technology to improve processing efficiency and quality. The pipe cutting part is detachable and can be loaded into 40GP container



High Speed

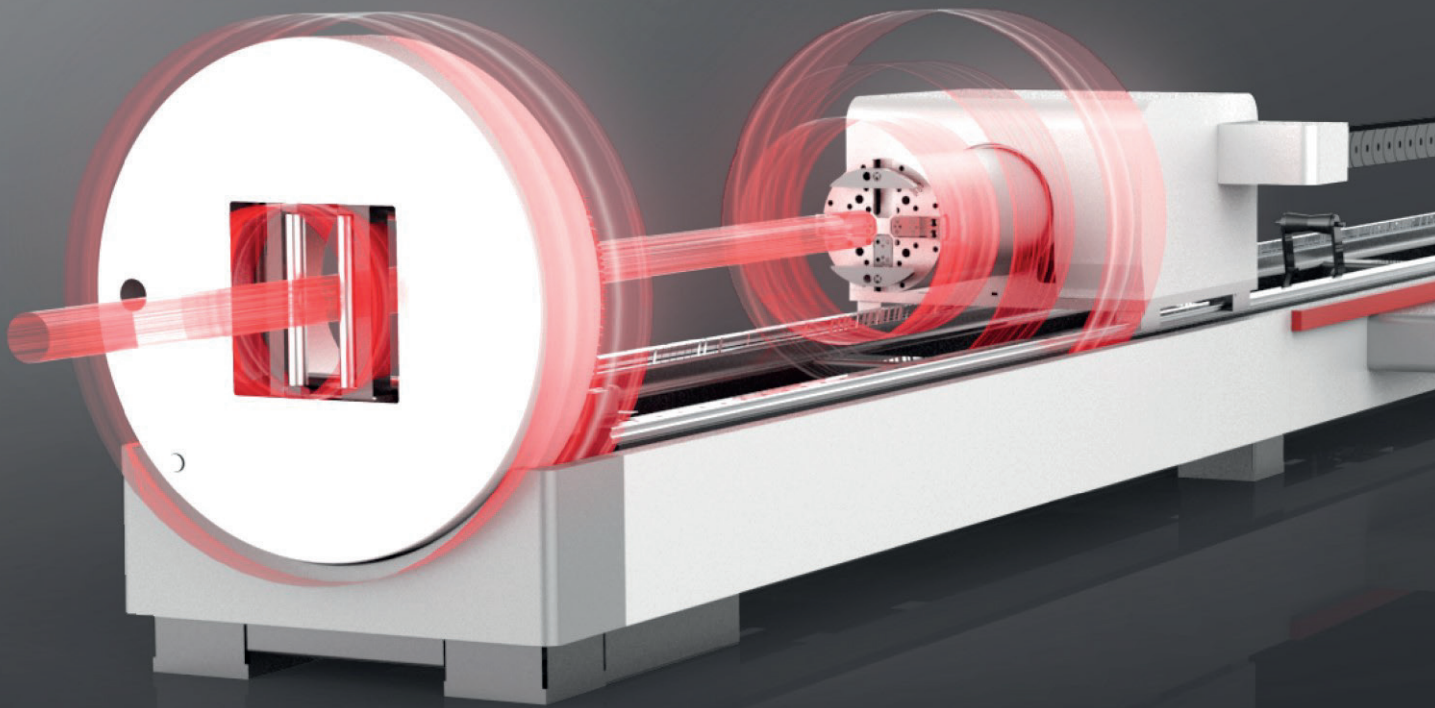
The light crossbeam can ensure the machine have high moving speed and improve the processing efficiency.



Higher photoelectric conversion efficiency

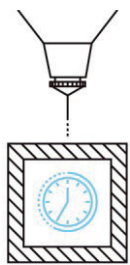
Second generation optical fiber transmission system
Better and more stable beam quality

6000W
4000W
3000W
2000W
1500W
1000W

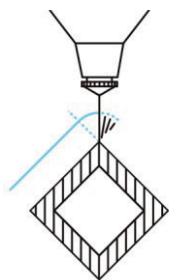


Design of a pneumatic chuck

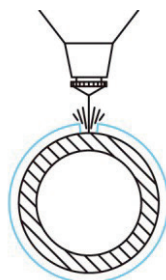
The front and rear chuck clamping design is easy to install, saves labor, and has no wear and tear. Ensure feeding stability and cutting accuracy; Automatic center adjustment, suitability for various pipes, and a high chuck rotation speed can all improve processing efficiency.



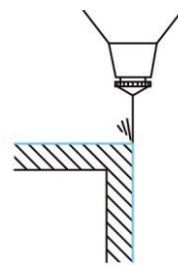
Breakpoint
memory



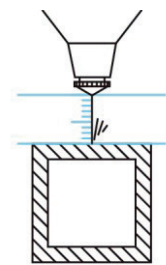
Corner cutting
optimization



Cutting with
protective film



Off board
follow



Fixed height
cutting

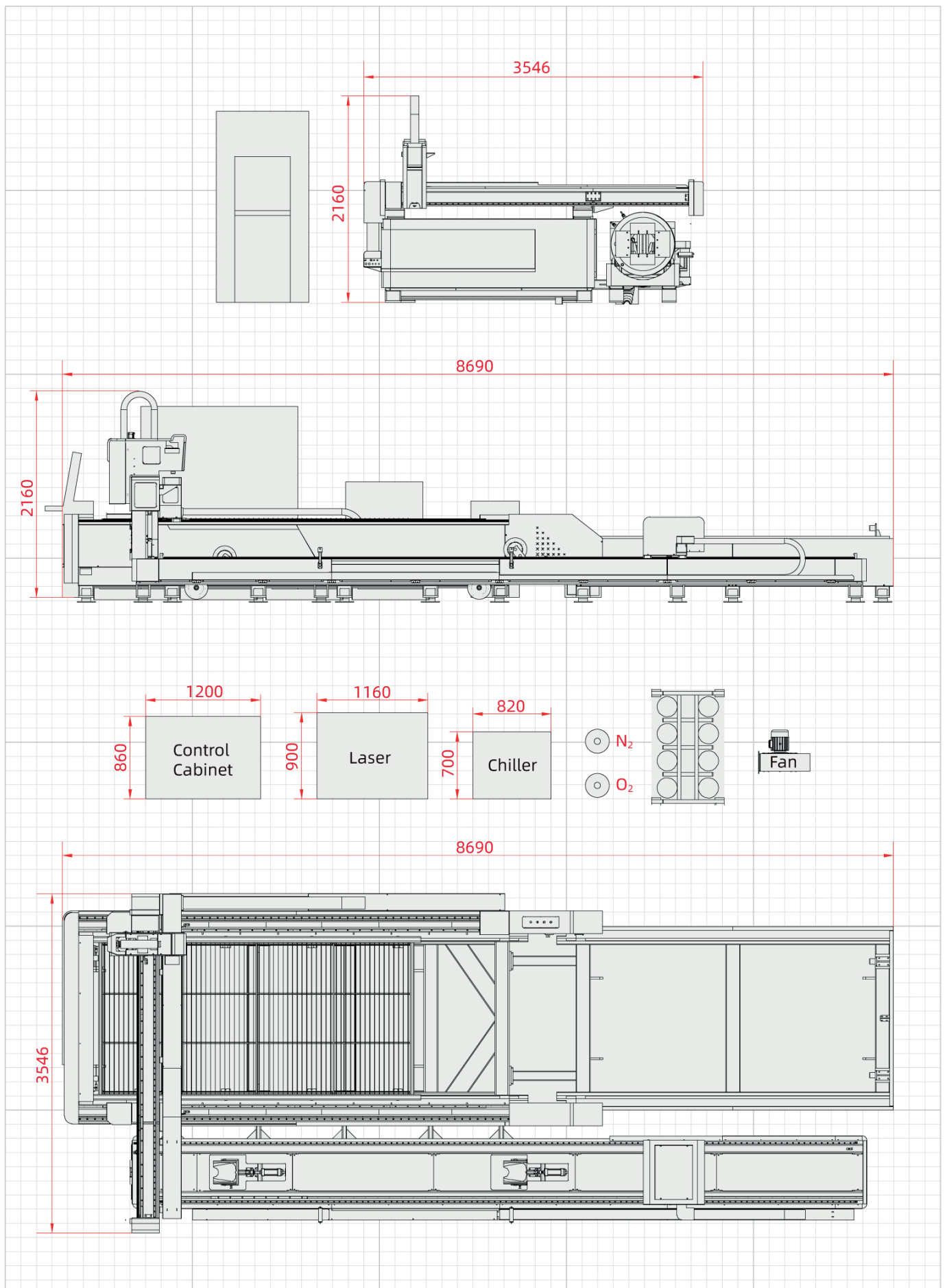
TECHNICAL SPECIFICATIONS

Machine Model	SMART3015 Plus T-3000
Cutting Area (L×W)	3048mm×1524mm
Laser Source	Raycus Fiber & 3000W
Transmission system	Gantry double- drive structure
CNC System	FSCUT 3000S
Servo Motor	INOVANCE
Laser Cutting Head	Raytools
Display	21.5" Industry LCD
Max Moving Speed	100m/min, Acceleration is 1.2G
Tube Processing Range	D20-D230mm
Tails Length	180mm
Position Accuracy (X and Y axis)	0.05mm
Reposition Accuracy (X and Y axis)	0.03mm
Lubrication system	Full-automatic
Power Supply Requirement	380V 50/60Hz
Max loading (KG)	2600 KG
Machine weight	≤8900 Kg
Appearance size	9410mm×3150mm×2060mm
Working environment	Temp:0- 40 °C,humidity:≤80%,

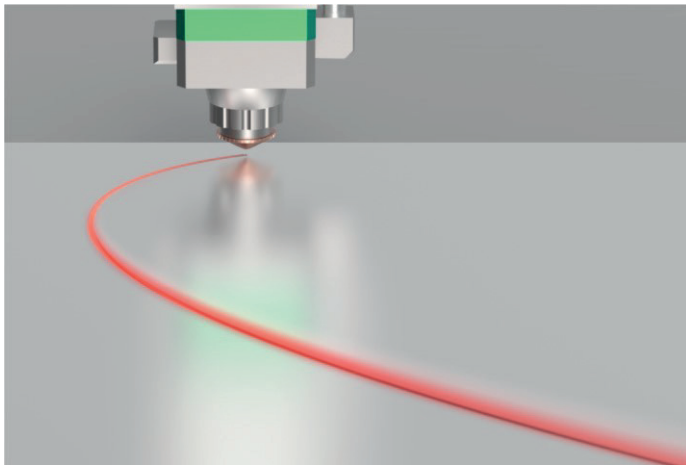
MACHINE CONFIGURATION

NO.	Model	Name	Quantity	Remarks
1	SMART3015Plus T	Fiber laser cutting machine (3000mm*1500mm)	1 set	HGTECH
2	3000W	Laser generator	1 set	RAYCUS
3	Water chiller	Special water chiller for fiber laser generator	1 set	HANLI 3000W
4	Laser head	High accuracy professional fiber laser head	1 set	Swiss Brand Raytools Auto Focus
5	Control system	FSCUT3000S	1 set	FSCUT3000S
6	Software	CYPCUT	1 set	CYPCUT
7	Driving system	High speed servo motor	4 set	Inovance servo motor X axis 850w Y axis 1300w, Z axis 400w
8	Reducer	imported	3 set	Motovario Franch
9	Electric components	imported	1 set	Schneider
10	Guide rail	imported	1 set	ITALY PEK
11	Rack	imported	1 set	T-win Taiwan

MACHINE OCCUPATION MAP

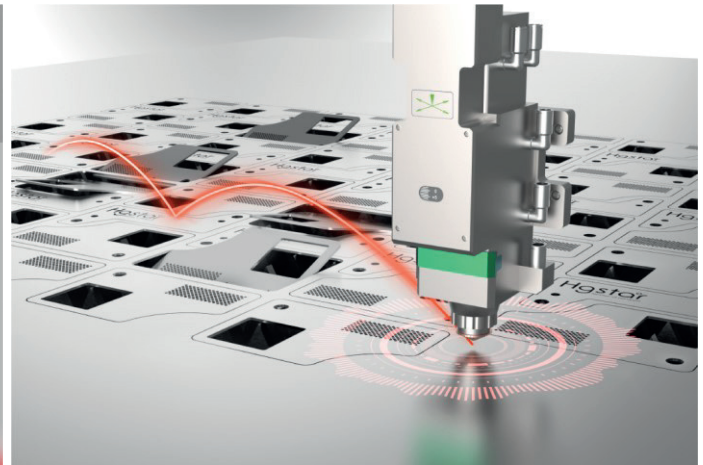


EXCELLENT FUNCTION



Vibration Suppression

One key quick setting can easily solve the vibration problem of thick plate processing



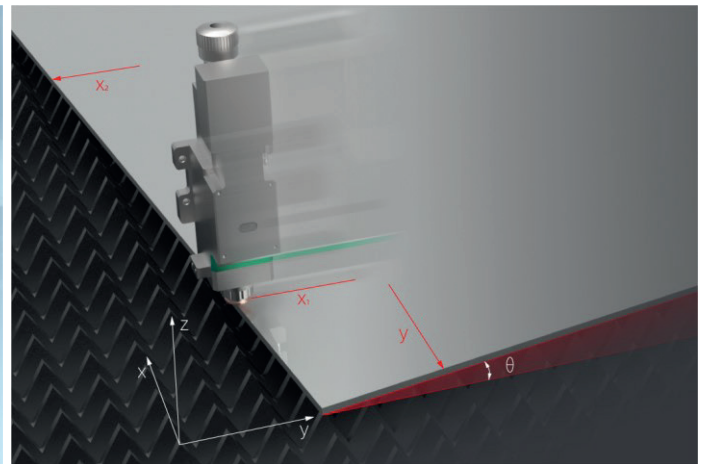
Intelligent obstacle avoidance

Intelligently avoid random raised areas in the cutting process and reduce the risk of head collision



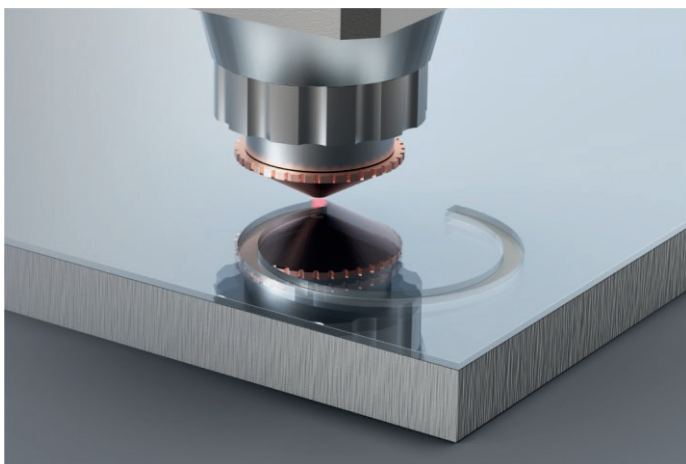
Exclusive tuning database

All you need to do is a simple touch, and the complicated operations are handed over to us



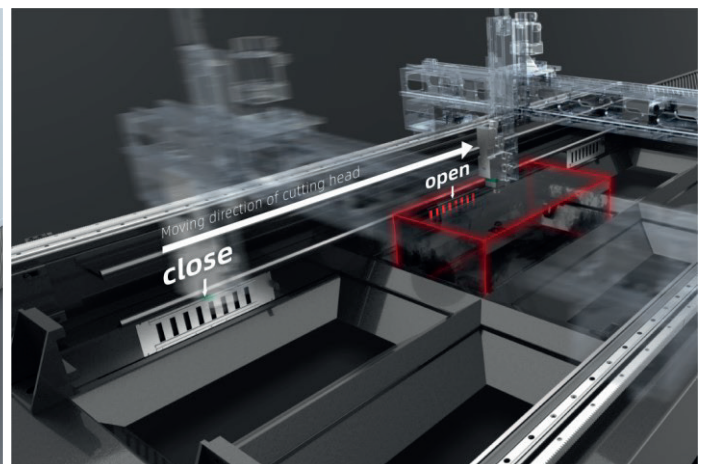
Three point edge finding

The inclination angle and origin of sheet metal are sensed through automatic edge-finding to avoid waste and save time



Membrane removal process

The sequence of film removal and pre perforation can be set flexibly and make workpiece cutting more perfect



Partition dust removal

Through fine setting, the dust removal tuyere can be opened and closed with the movement of the cutting head. Under the same fan configuration, the dust removal effect is effectively enhanced

CUTTING PARAMETER

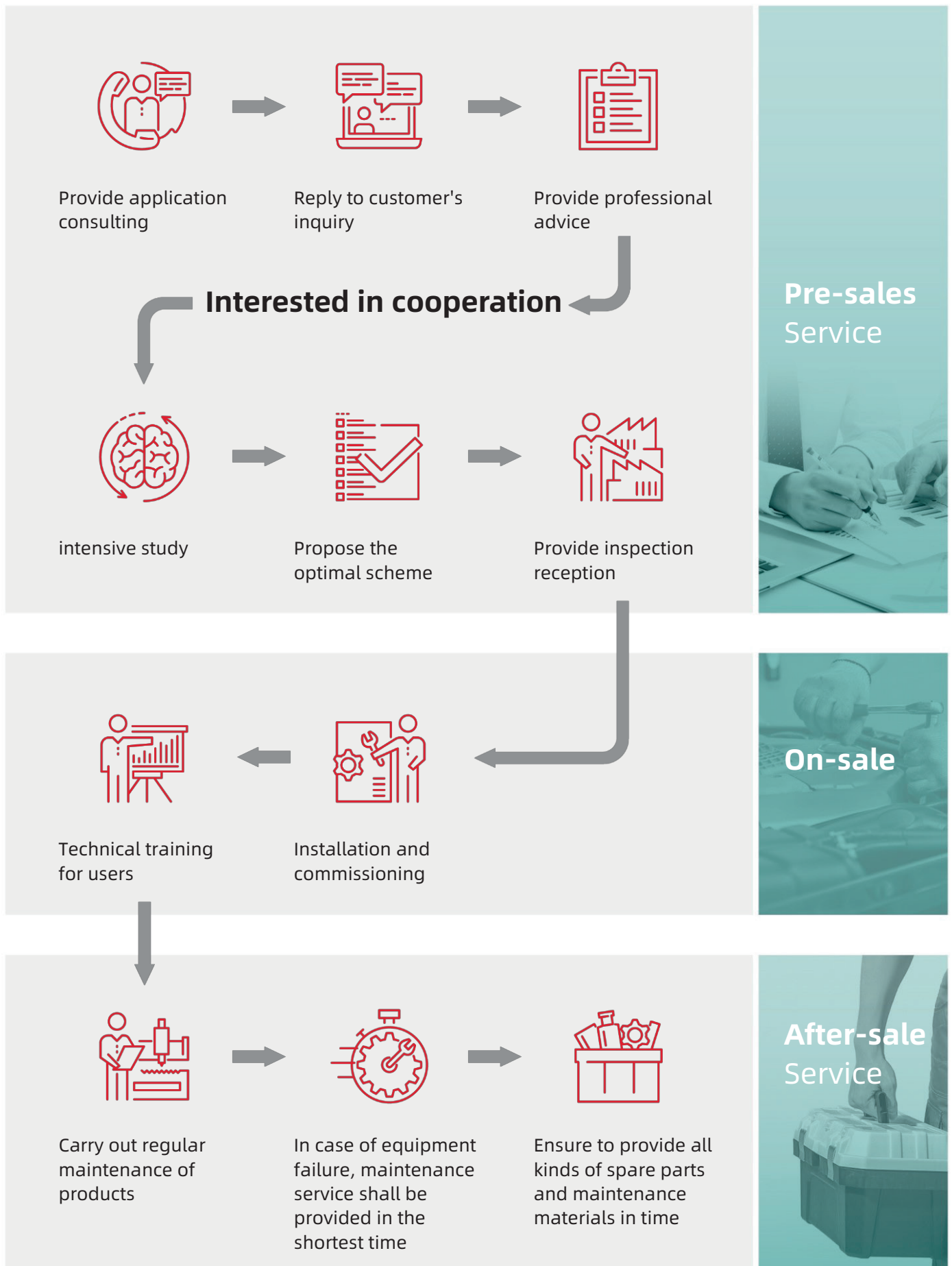


Cutting Samples

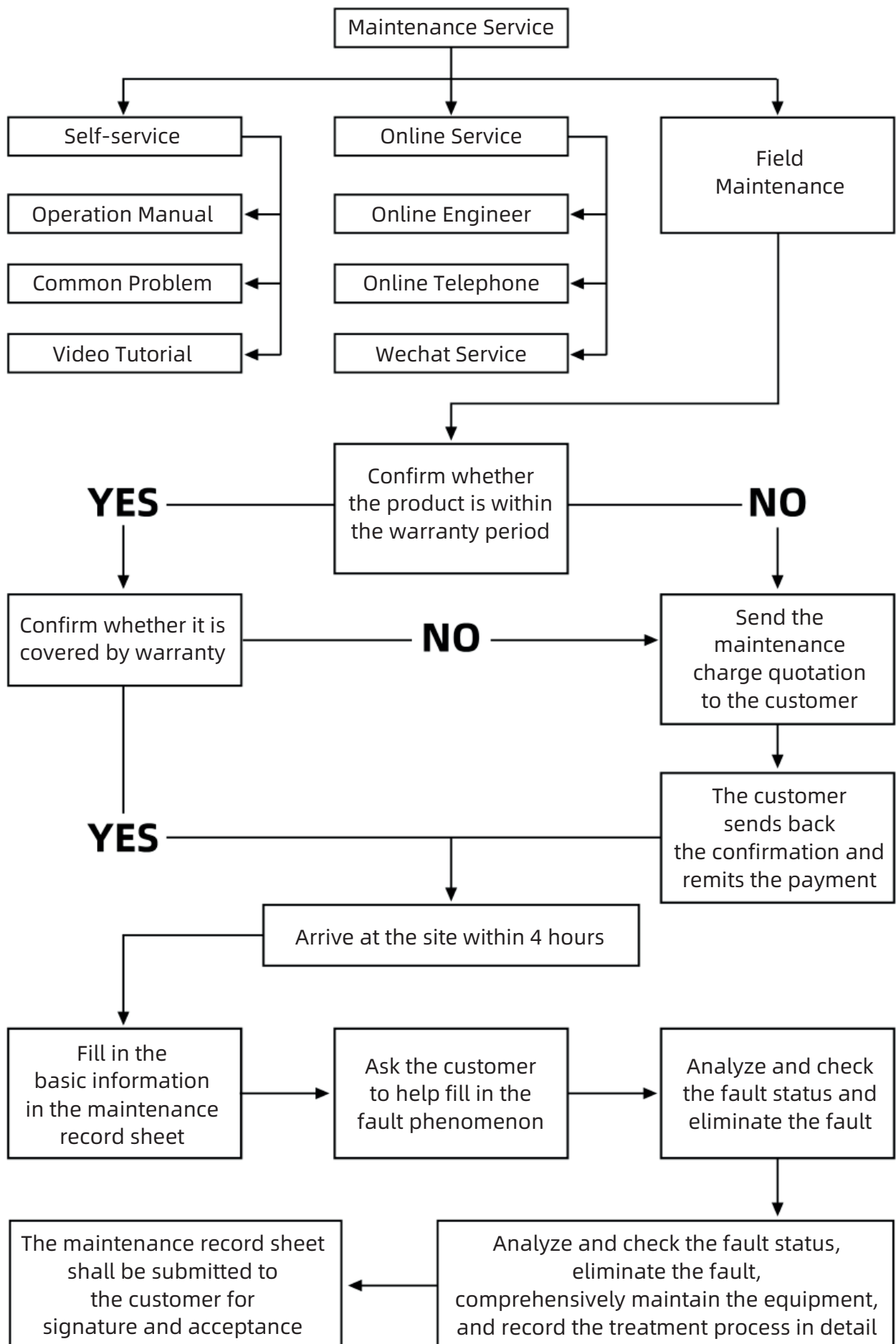
Applicable to cutting carbon steel, stainless steel, aluminum, brass , alloy metals, etc.



SERVICE PROCESS



SERVICE MAINTENANCE PROCESS





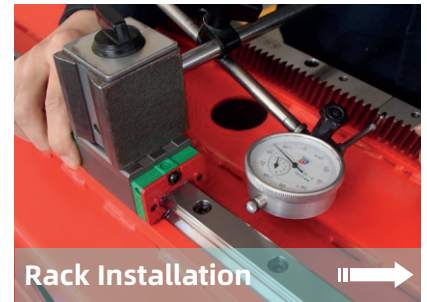
Bed Foot Installation ||>

Adjust the height of the feet according to the test results of the strip level to ensure the accuracy of subsequent installation



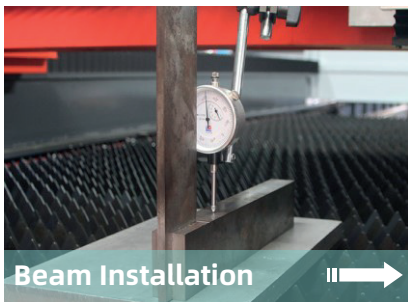
Rail Installation ||>

Use photoelectric autocollimator to detect the straightness and flatness of the guiderail to ensure that the detection value is within the standard range



Rack Installation ||>

The relative position of the guide rail and the guide rail is locked and clamped by the measuring rod. Statistics and analysis of measurement data to ensure that they are parallel



Beam Installation ||>

After the beam is installed . use a three-coordinate measuring instrument to check the coaxiality to ensure the relative perpendicularity of the X / Y / Z three-axis



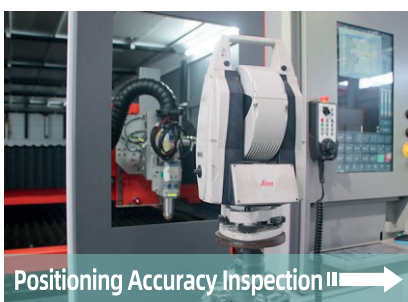
Positioning Accuracy Inspection ||>

The laser interferometer tests the X-axis positioning accuracy to ensure the accuracy of the whole machine



Positioning Accuracy Inspection ||>

The laser interferometer tests the Y-axis positioning accuracy to ensure the accuracy of the whole machine



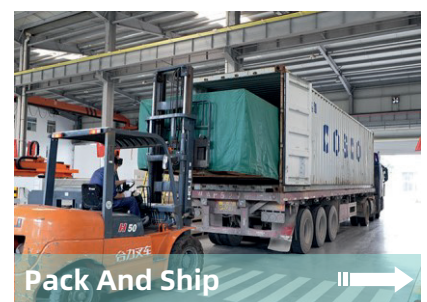
Positioning Accuracy Inspection ||>

The laser interferometer tests the Z-axis positioning accuracy to ensure the accuracy of the whole machine



72h Machine Aging Test ||>

Simulate the high-intensity test of various harsh conditions in the actual use of the equipment , and at the same time , according to the requirements of use , rationalize the improvement to ensure the factory pass rate and improve the reliability of the equipment

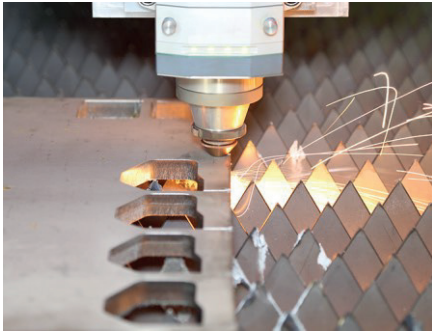


Pack And Ship ||>

Adopt sealed composite aluminum foil moisture-proof low-pressure packaging and thick wooden boards to protect the fuselage to prevent bumps and collisions during shipping , and minimize unnecessary mechanical losses that may occur during transportation

1

Machine Inspection



2

Component Fixing



3

Protective Film Wrapping



4

Wooden Boxseal



5

Edge Reinforcement



6

Separate Packaging



7

Lifting Rail Transfer



8

Container Loading



9

Transportation





OMNITEC
LÁSER

Contáctanos

✉ info@grupohitec.com

✉ ventas@grupohitec.com

🌐 grupohitec.com